

SENIOR PHOTOS DUE  
MONDAY, OCT. 2, 2023

Please submit to :

[GPStudentMedia@sno.wednet.edu](mailto:GPStudentMedia@sno.wednet.edu)

# Senior portraits are not selfies

They are:

1. A forward-facing portrait.
2. A close-up of you with your entire head in the photo.

**THIS**



**NOT THIS**



Leave room around your head.

# THIS



No hands.

# NOT THIS



# THIS



No feet.

# NOT THIS



Even with a good crop, photo looks bad.



# THIS



# NOT THIS

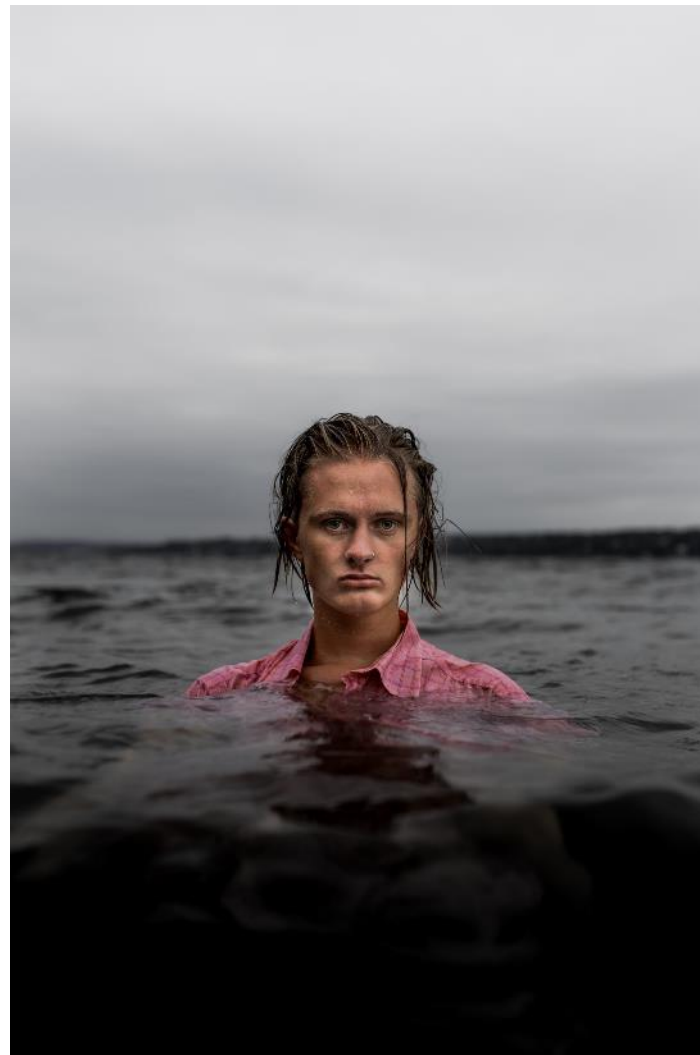


**No props, hats or hands.**

**THIS**



**NOT THIS**





2.5" wide →



Top of head to  
bottom of chin  
should be 1.5" or  
almost half of  
the photo height.

3.5" tall

# Bad examples



To recap:

1. Face forward.
2. Your face should take up half of your photo.
3. There should be space around your head.
4. No hands, feet, flags, props or hats.

Email to : [GPStudentMedia@sno.wednet.edu](mailto:GPStudentMedia@sno.wednet.edu)

**\*Baby ads are due THE SAME DAY as your senior picture.**