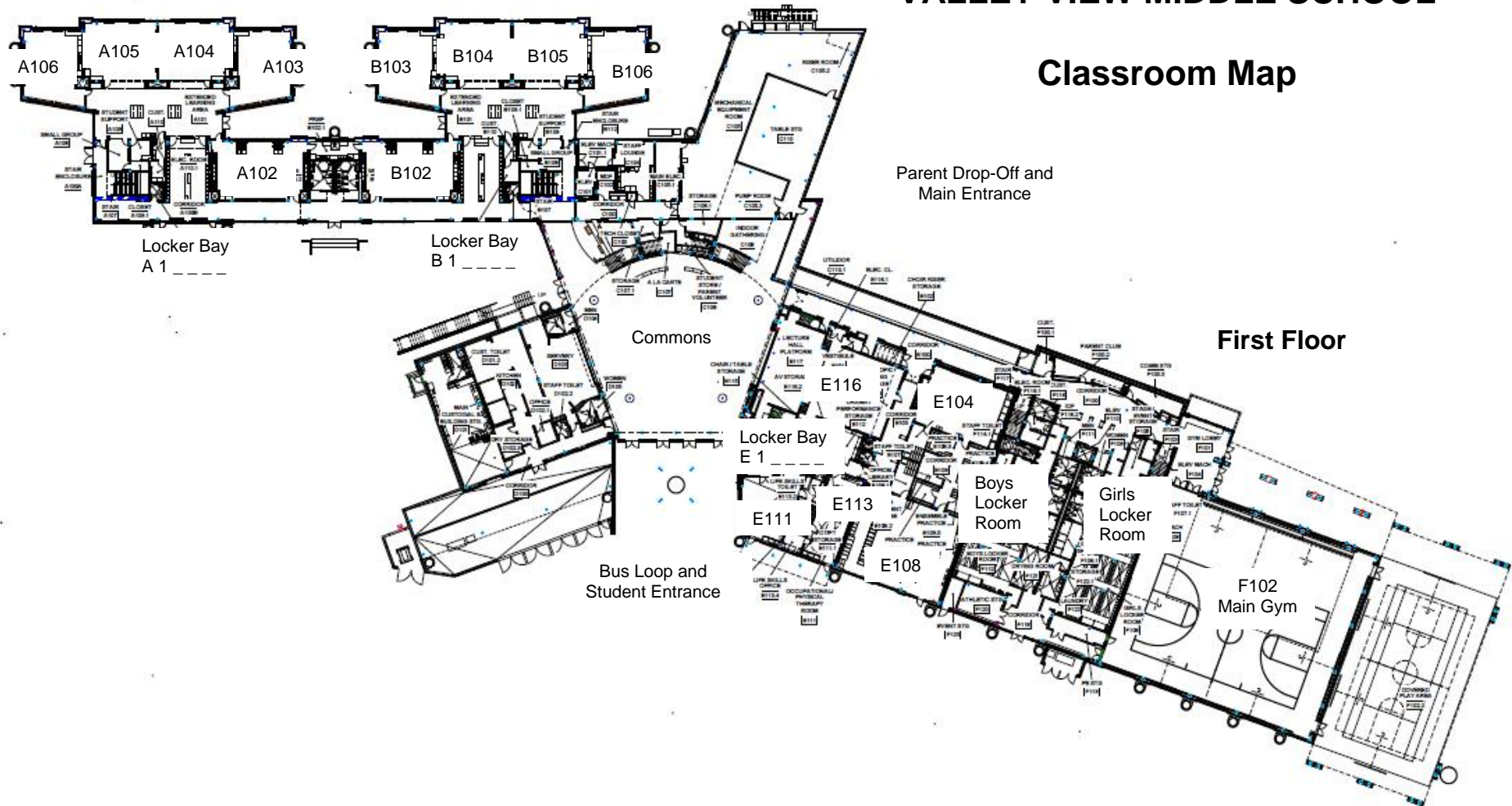


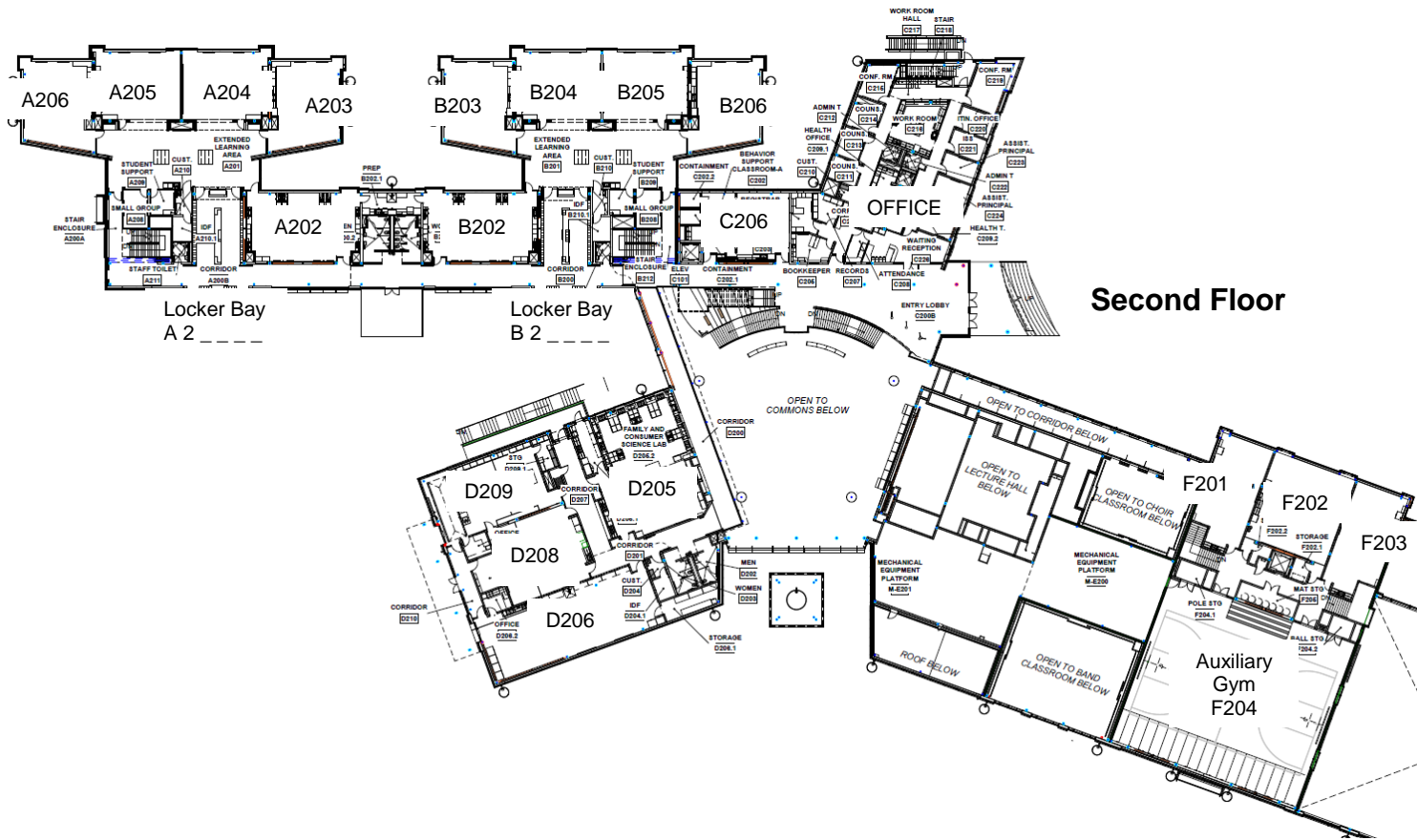
VALLEY VIEW MIDDLE SCHOOL

Classroom Map

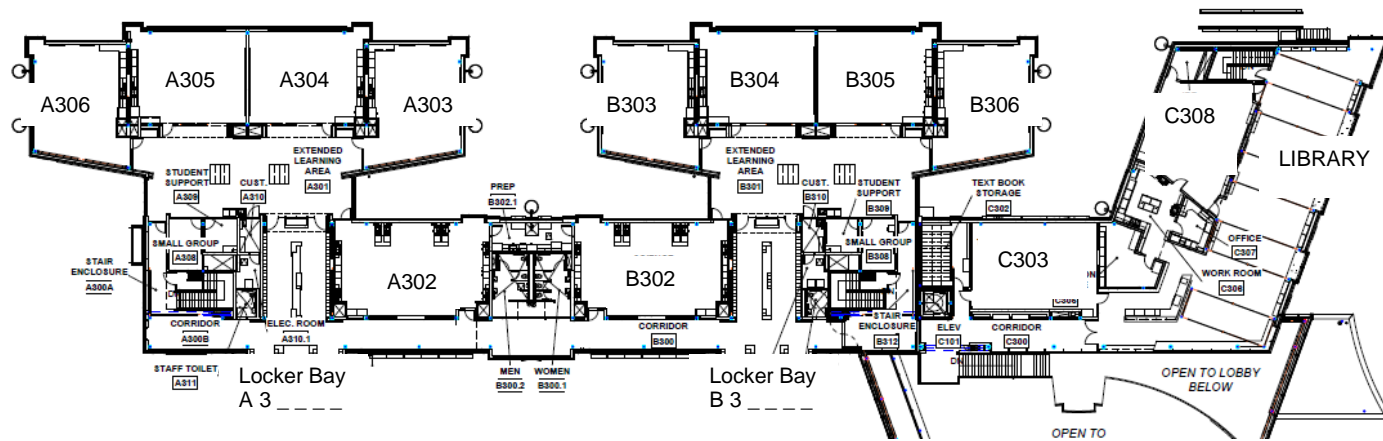


LOCKER INFORMATION

Students are responsible for providing their own locks for their lockers. Lockers are located in the locker bays leading into the extended learning areas. Your locker number will tell where your locker is located. Each locker has 6 Characters: _____. The first character indicates the area (A, B, or E). The second character indicates the floor (1, 2, or 3). The third, fourth, and fifth character indicate the locker number (001, 002, etc.). The sixth character indicates whether the locker is an upper or lower locker (U=Upper, L=Lower).



Second Floor



Third Floor