

For assistance with these instructions, our Support Line is available at: **360-563-3000**

Support Line Hours

Monday-Thursday: 7:30 a.m. – 7:30 p.m.

Friday: 7:30 – 11:30 a.m.

Preparing a Student Tablet

You will need:

Student Information

_____ Student ID Number

_____ @studentssd.org
Student's School Email Address (*firstname.lastname@studentssd.org*)

Home WiFi Info

_____ Home Wi-Fi Name

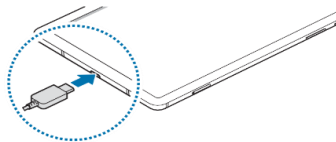
_____ Home Wi-Fi Password

Using a district provided hot spot?

SSD-HS
_____ SSD Hotspot Wi-Fi Name

ssdstudent
_____ SSD Hot Spot Wi-Fi Password

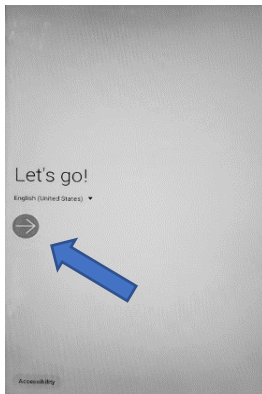
Charge Your Device Fully



- Plug the USB power adapter into an electric socket.
- After fully charging, disconnect the charger from the device.
- Allow a depleted battery to charge for a few minutes before turning on the device.

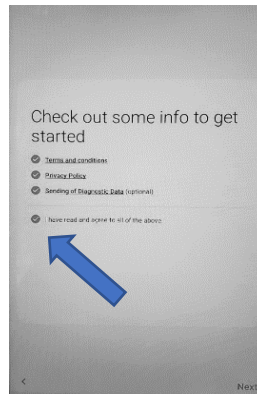
Configuration Steps

1



Tap (not swipe) the blue arrow.

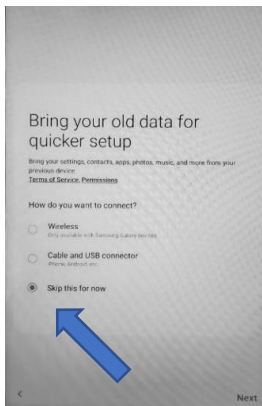
2



Review policies and agreements and choose "I have read and agree to all of the above".

Tap "Next."

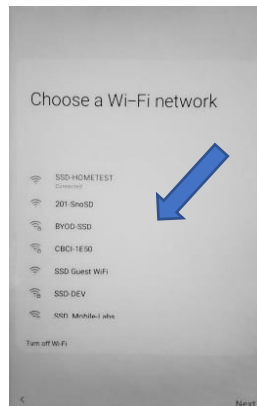
3



Tap "Skip this for now."

Tap "Next"

4



Choose and connect to your wi-fi.

Tap "Nex," allow a few minutes for the network to attach.

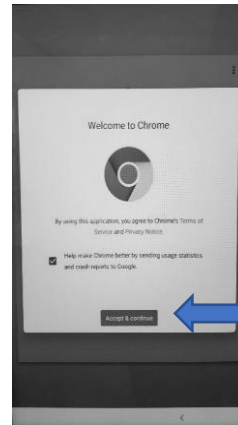
5



Review the Device Policy and tap "Accept & continue."

This will begin the setup/update process, which can take up to 10 minutes.

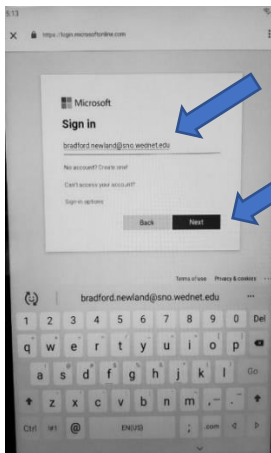
6



Once the set-up is complete, you will see the Welcome to Chrome screen.

Tap "Accept & continue".

7



Use the student's school email address to sign in. School emails follow the format:

first.last@studentssd.org

example:

mary.smith@studentssd.org

Tap "Next"

8



The password is the student's 6 digit school ID number (no leading 0)

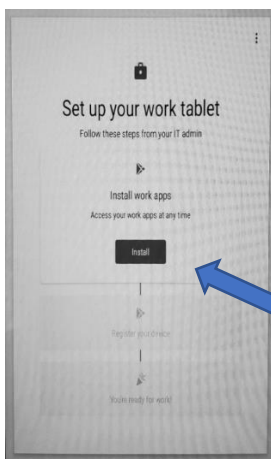
example:

987654 ✓

0987654 ✗

Tap "Sign in"

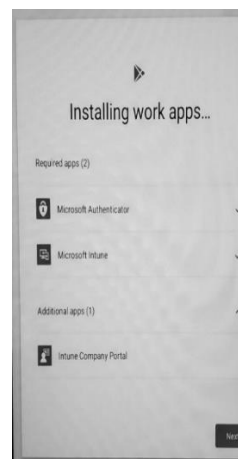
9



Tap "Install"

This may take 2-8 minutes to complete.

10



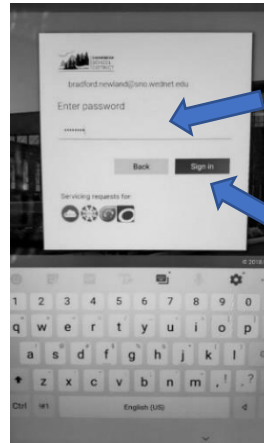
Tap "Next"

11



Tap "SIGN IN"

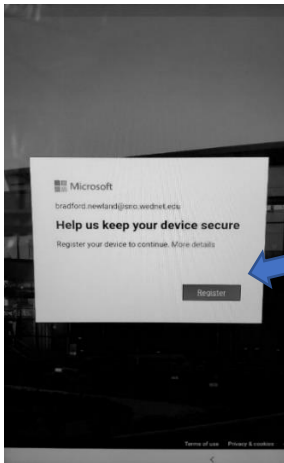
12



Enter the same password used in step 8.

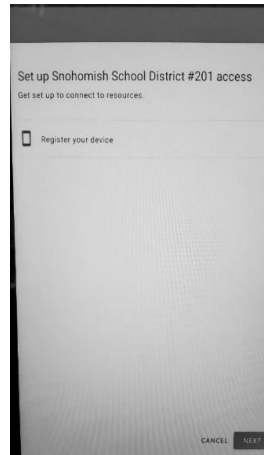
Tap "Sign in"

13



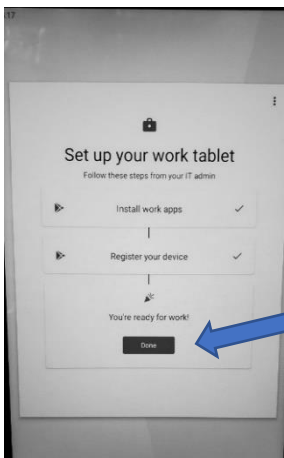
Tap "Register"

14



Tap "NEXT" to complete the registration process.

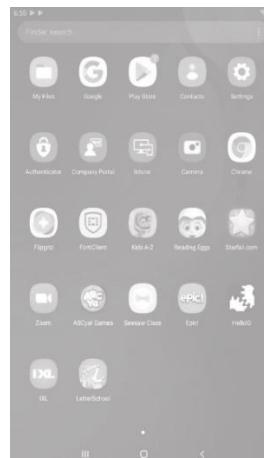
15



Tap "Done" to install School District Apps.

This process will take up to 40 minutes to complete.

16



You'll know the setup is complete when you can swipe up from the home screen and see several apps to choose from.