

FRESHMEN GUIDANCE: HIGH SCHOOL AND BEYOND

Glacier Peak School Counselors

AGENDA



Glacier Peak Counseling Team



16 Personalities Assessment



Explore Personalities



High School and Beyond Plan



Matching Game

GLACIER PEAK COUNSELING TEAM



Mrs. Amador (A-Cop)



Ms. Hansen (Cor-Hal)



Mrs. Weimar (Ham-McB)



Mr. Childers (McC-R)



Mrs. McHugh (S-Z)



Mrs. Kuehn
Counseling
Secretary



Mrs. Winckler
College and
Career Specialist



Mrs. Appelgate
Learning Support
Specialist

WHAT CAN YOUR SCHOOL COUNSELOR DO FOR YOU?



SOCIAL EMOTIONAL
SERVICES



COLLEGE & CAREER
GUIDANCE



ACADEMIC
SUPPORT




COUNSELOR
MEETINGS: WEEK
OF DECEMBER 2ND

16PERSONALITIES.COM

The screenshot shows a web browser window with the URL 16personalities.com/free-personality-test. The browser's address bar includes navigation icons (back, forward, refresh, home) and various system icons (star, notifications, Wi-Fi, battery). The website's header features the 16Personalities logo on the left, followed by navigation links: "Personality Types", "Articles & Insights", "Community", and "Academy" (highlighted with a teal background). On the right side of the header, there are "Log In" and "Take the Test" buttons. The main content area has a green background with the heading "Free Personality Test" and the sub-heading "NERIS Type Explorer®". Below this, three white cards with colored backgrounds highlight key features: "Fast & Easy" (yellow background, stopwatch icon, "Takes less than 12 minutes."), "Be Yourself" (light blue background, blue cube icon, "Answer honestly, even if you don't like the answer."), and "Complete It All" (pink background, person icon with a slash, "Try not to leave any 'neutral' answers.>").


← → ↻ 🏠 🔒 16personalities.com/free-personality-test ☆ 📧 📺 📱 📶 🔋 🔊 🔇


Apps


 **16Personalities** Personality Types Articles & Insights Community **Academy** 🌐 Log In **Take the Test**

Free Personality Test

NERIS Type Explorer®


Fast & Easy
Takes less than 12 minutes.


Be Yourself
Answer honestly, even if you don't like the answer.


Complete It All
Try not to leave any "neutral" answers.

PRAGMATISTS

PRAGMATISTS

Pragmatists love their work when they can use logical systems to produce tangible results.

ESTJ

Practical Supervisors

General Manager
Insurance Agent
Loan Officer
School Administrator



CHEF

ISTJ

Productive Realists

Accountant
Office Manager
Probation Officer
Logistician



SYSTEMS ADMINISTRATOR

ESTP

Agile Troubleshooters

Building Contractor
Police Detective
Financial Advisor
Sales Manager



MILITARY OFFICER

ISTP

Adaptable Technicians

Carpenter
Mechanic
Computer Hardware Engineer
Operations Analyst



POLICE OFFICER

CARETAKERS

CARETAKERS

Caretakers love their work when they can do practical things to help other people.

ESFJ

Caring Providers

Elementary Teacher
Child Care Director
Nutritionist
Cosmetologist



REGISTERED NURSE

ISFJ

Sensible Helpers

Social Worker
Bookkeeper
Medical Secretary
Executive Assistant



KINDERGARTEN TEACHER

ESFP

Outgoing Entertainers

Recreation Director
Customer Service Rep
Receptionist
Dental Assistant



BARTENDER

ISFP

Attentive Artisans

Veterinary Technician
Equipment Repairer
Surveyor
Home Health Aide



JEWELER

THEORISTS

THEORISTS

Theorists love their work when they can come up with innovative new ideas and inventions.

ENTJ

Driven Directors

Executive
Engineer
Attorney
Architect



PHYSICIAN

INTJ

Strategic Masterminds

Software Developer
Technical Writer
Judge
Surgeon



MICROBIOLOGIST

ENTP

Inspired Inventors

Urban Planner
Entrepreneur
Producer/Director
Real Estate Agent



REPORTER

INTP

Independent Scientists

Software Engineer
Medical Scientist
Mathematician
Psychiatrist



COLLEGE PROFESSOR

EMPATHS

EMPATHS

Empaths love their work when they can improve people's lives and make the world a more beautiful place.

ENFJ

Inspiring Guides

Nonprofit Director
Teacher
Health Educator
PR Specialist



MINISTER

INFJ

Compassionate Counselors

School Counselor
Writer
Interior Designer
Pediatrician



VETERINARIAN

ENFP

Expressive Advocates

Recreational Therapist
Restaurateur
Preschool Teacher
Travel Writer



LANDSCAPE ARCHITECT

INFP

Creative Individualists

Animator
Psychologist
Librarian
Author



FINE ARTIST

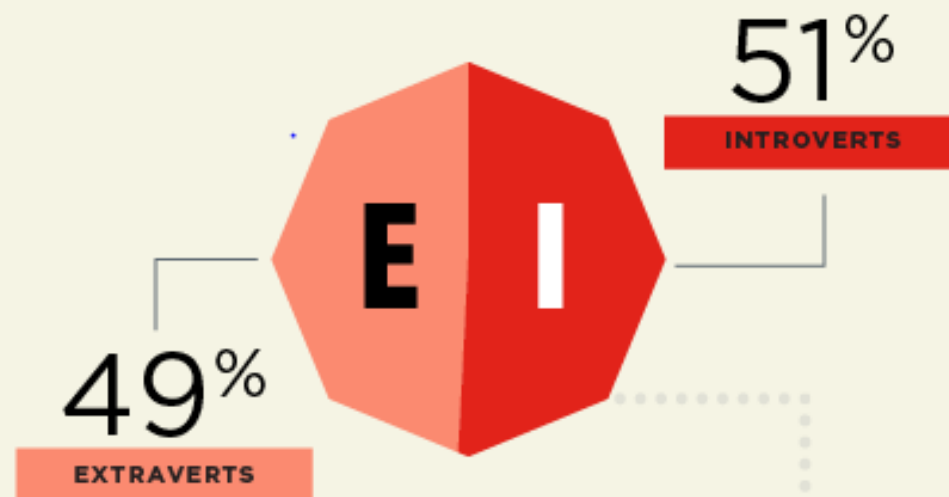
EXTRAVERTS VS. INTROVERTS

ENERGY STYLE



Extraverts like working with other people, on teams, and in busy spaces.

Introverts like working independently or in small groups, in calm, quiet spaces.



SENSORS VS. INTUITIVE

THINKING STYLE



Sensors like working with concrete things like people, data, and machines.

Intuitives like working with abstract things like theories, ideas, and possibilities.

73%

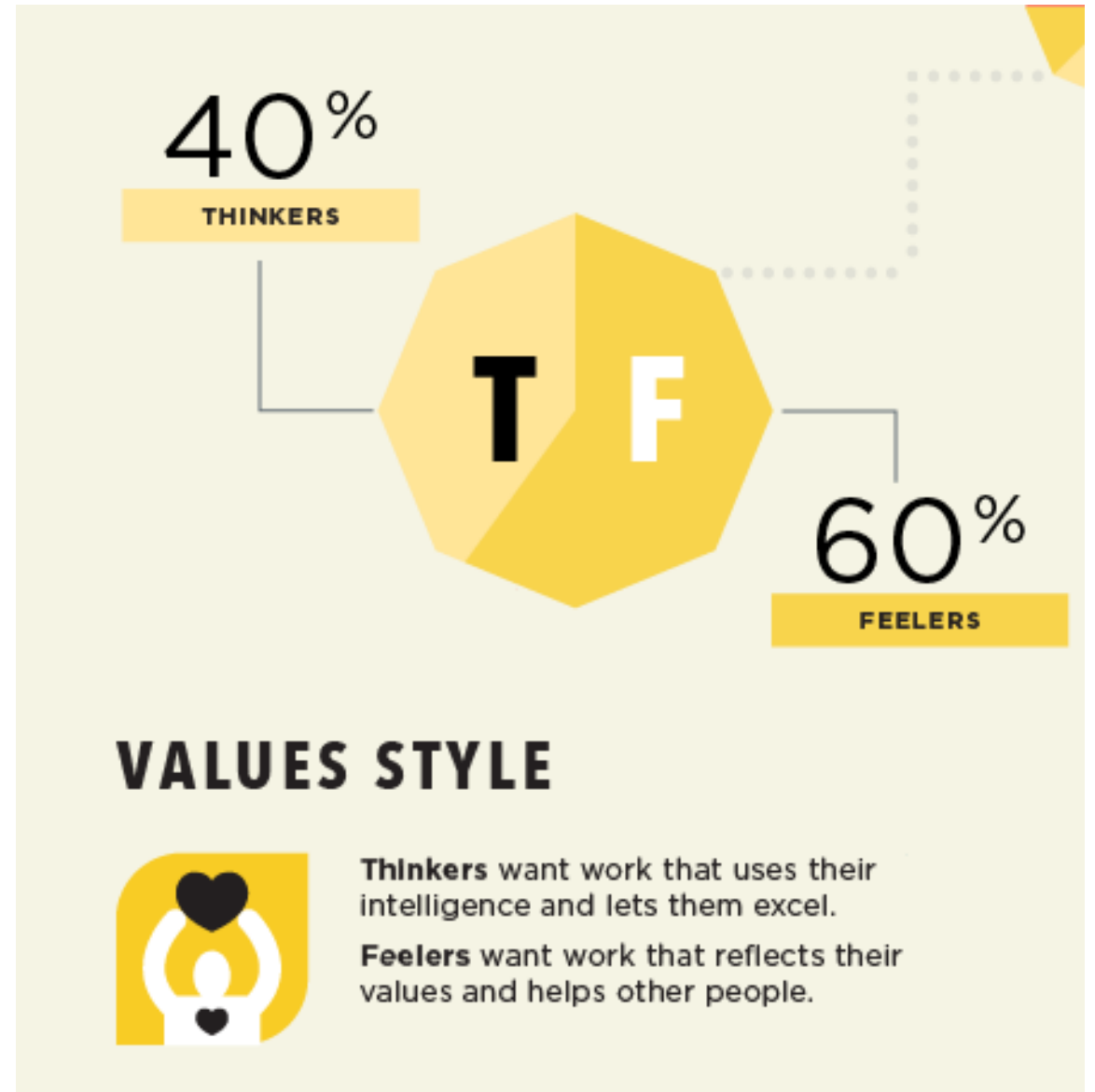
SENSORS



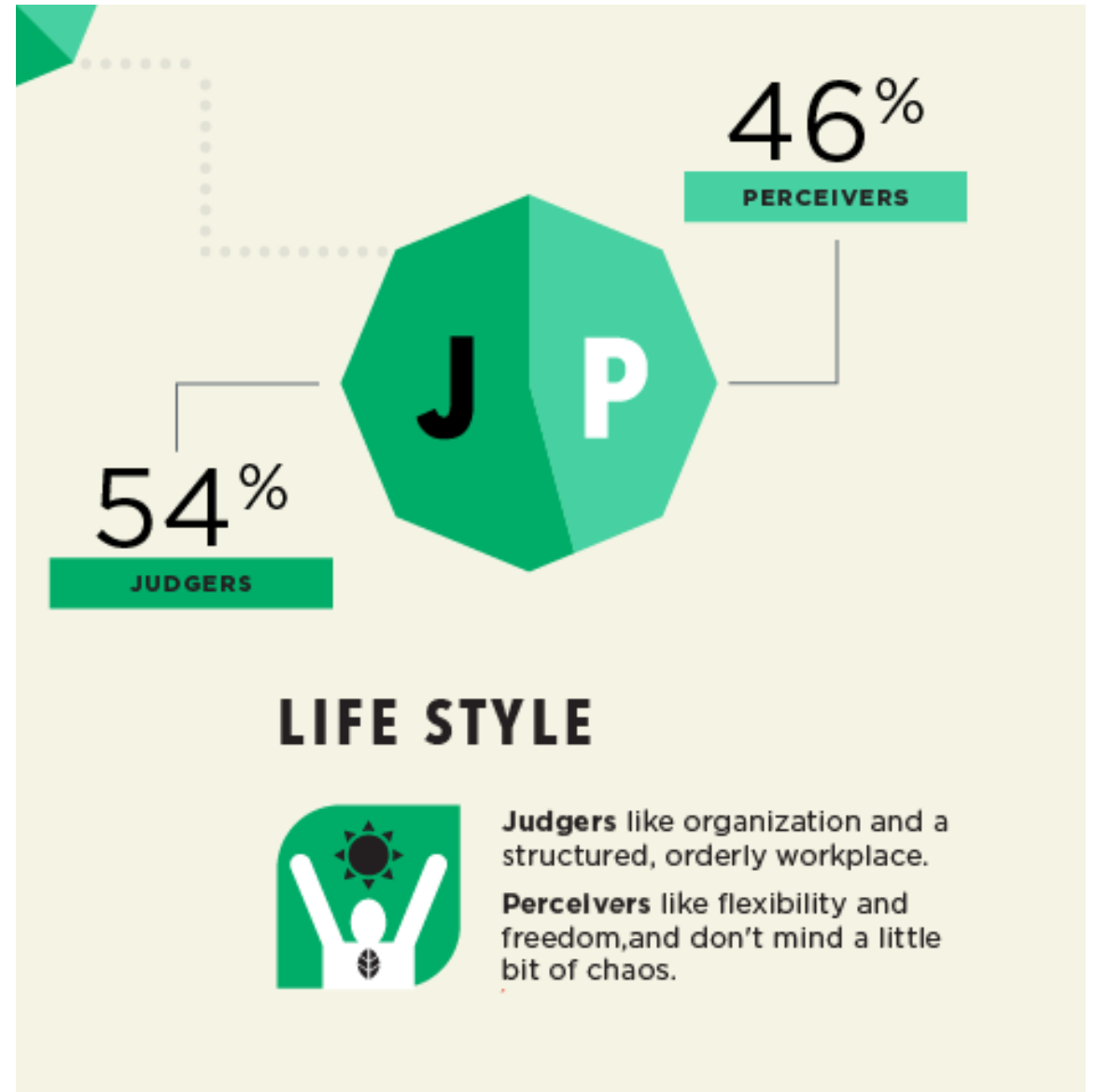
27%

INTUITIVES

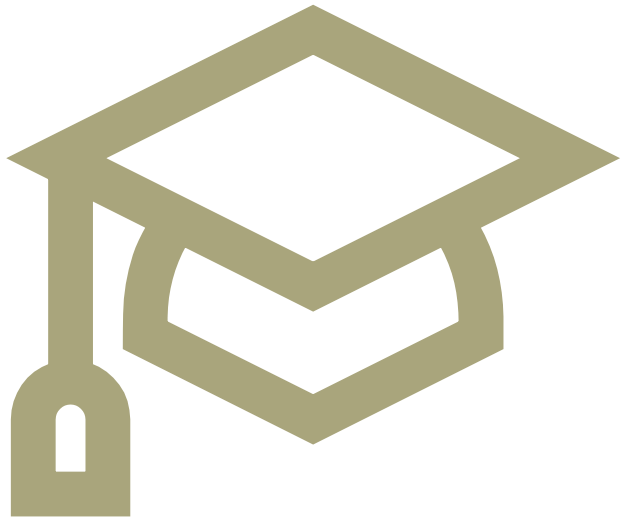
THINKERS VS. FEELERS



JUDGERS VS. PERCEIVERS



WHAT IS THE HIGH SCHOOL AND BEYOND PLAN?



- A High School and Beyond Plan (HSBP) is an important step in transition to life after high school
- The HSBP will help you set short and long term goals, prepare for, and be ready, for your post-high school training and future career plans.
- You will be revising your High School and Beyond Plan as your interests and/or goals change over the next four years.
- The HSBP is a graduation requirement for all GPHS students.

GLACIER PEAK WEBSITE: MY SCHOOL DATA

Students Directory

CONNECT WITH US  

A B C D E F G H I J K L M N O P Q R S T U V W

A

- Adobe CC 2018 Offer
- All The Edge
- Apex Online Learning
- Athletics
- Attendance

B

- Building Map
- Building Positive School Climate
- Bus Routes/Schedules

C

- Canvas
- Career Center
- Cheer
- Club Information
- College Testing
- Commonly Requested Forms & Documents
- Community Service

- Dual Credit Options

E

- Email (Check Your Email)

G

- Graduation Requirements
- Grizzly Cub
- Grizzly Online Newsource

H

- Health Information
- Hello ID
- Honors and Advanced Placement (AP)

L

- Library

M

- Microsoft Office - Student/Staff Offer
- My School Data

N

R

- Registration Information

S

- SAT & ACT Testing
- SAT Prep
- Schedule Change and Drop Policies
- School Closure - Weather Delays/Late Start
- Senior Information
- Student Handbook and Calendar (Glacier Peak High School)
- Student Online Resources
- Student Start-Up
- Student-Parent Handbook (District)
- Suicide Prevention
- Summer Assignments
- Summer School

T

- Tech Tips - Parent/Student
- Transcripts

MY SCHOOL DATA



Snohomish School District



User name



Password

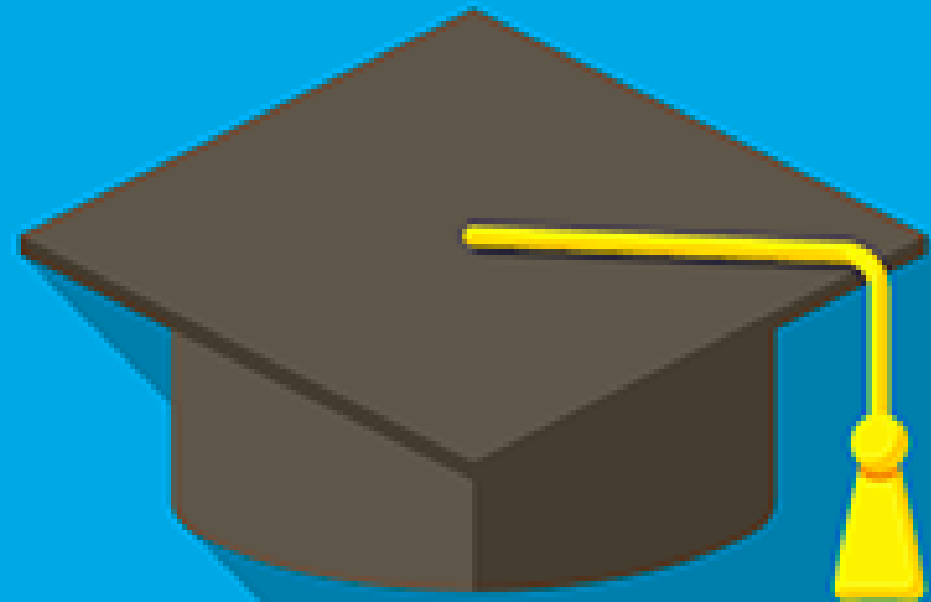
Log On

[Forgot your password?](#)

You have been signed out!



HIGH SCHOOL AND BEYOND



HIGH SCHOOL & BEYOND

HIGH SCHOOL AND BEYOND PLAN



Select Language ▾

Powered by [Google Translate](#)

Student Profile | **My Plan** | Other Graduation Information | Counselor Dashboard | Setup | High School and Beyond Info

No picture available.

Class Of _____

Grade _____

PRINT

Who Am I

Your skills, interests, values, personality, dreams, etc.

What Can I Become

Your hopes, dreams, or goals about a future job or career pathway.

How Will I Become That

Skills, education, or training needed for your dream job.

MEME MATCHING



Kahoot.it

Username: First Name Last Initial

Link: <https://create.kahoot.it/share/16-personalities-meme-game/b66602fb-57f0-4e11-b7ab-38364867c8b2>